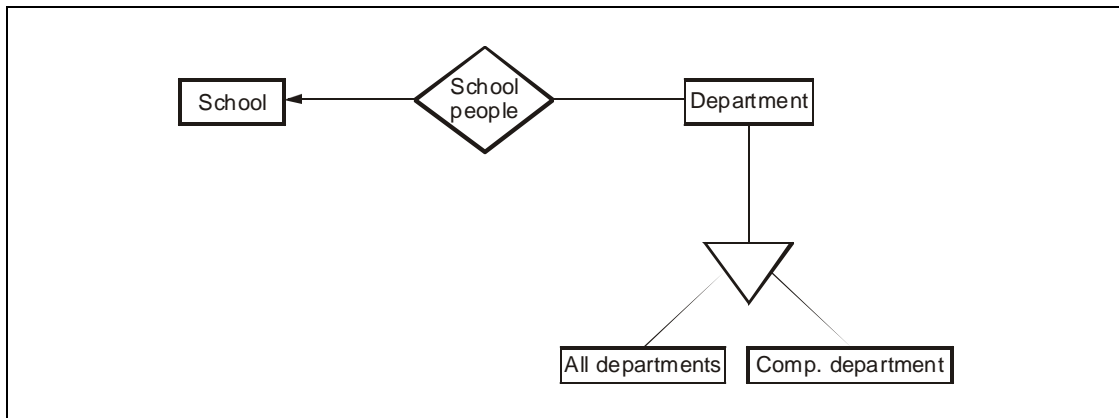


Database Management Systems

Dec-2001

Q. 2 c) E - R diagram



Ans. : Cascaded on delete operation

Create table r

(- - - - -

primary key (),

foreign key (B) references (A)

on delete cascade);

The specification CASCADE is the referential actions for that delete rule. The meaning of these specifications is that a delete operation on the tuples of relation s should cascade to delete matching tuples in relation r as well.